

# MONTHLY MEMBERSHIP PROGRESS REPORT

LOCATION AUSTRALIA

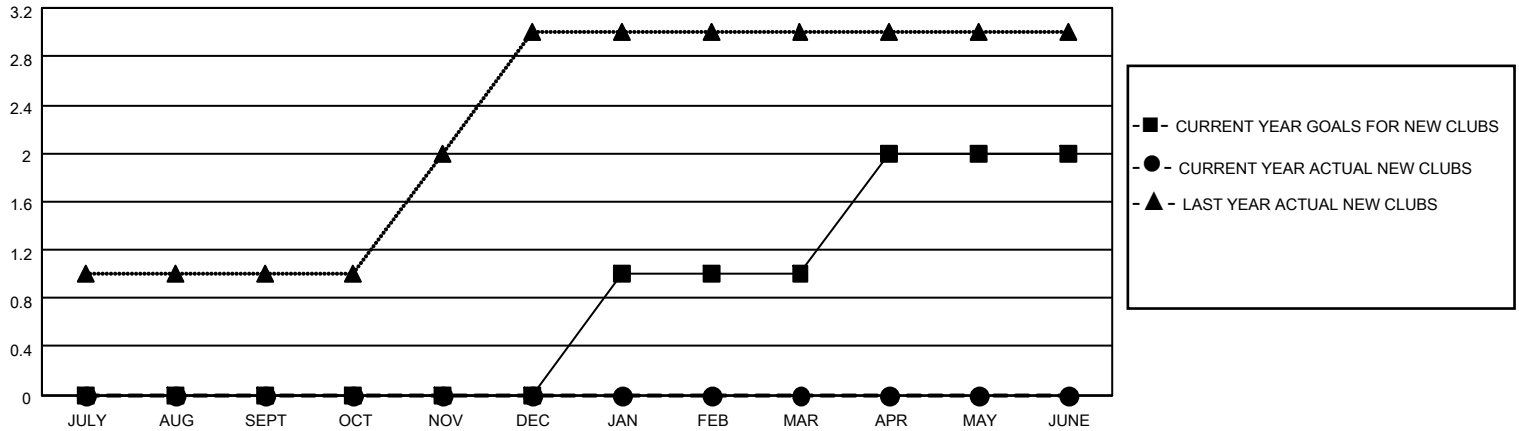
District 201C2

Results as of: 6/30/2022

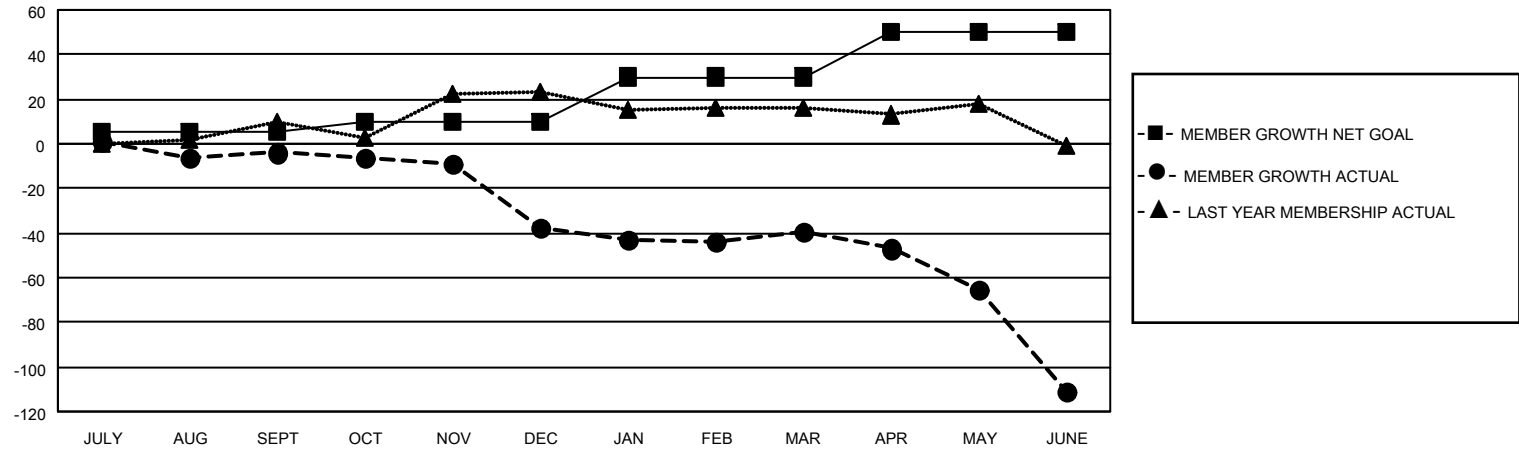
Clubs			
RESULTS FOR 2021-2022			
QUARTER	NEW CLUB GOAL	NEW CLUBS	DROPPED CLUBS
JULY/AUG/SEPT	0	0	0
OCT/NOV/DEC	0	0	0
JAN/FEB/MAR	1	0	1
APR/MAY/JUNE	1	0	2

Members			
RESULTS FOR 2021-2022			
QUARTER	MEMBER GROWTH NET GOAL	MEMBER GROWTH ACTUAL	DROPPED MEMBERS ACTUAL (including transfers)
JULY/AUG/SEPT	5	28	28
OCT/NOV/DEC	5	40	61
JAN/FEB/MAR	20	36	32
APR/MAY/JUNE	20	46	105

**GOALS AND ACTUAL NEW CLUBS CUMULATIVE**



**GOALS AND ACTUAL MEMBERS CUMULATIVE**



**DROPPED CLUBS: 3**

**46 CLUBS OF 67 ADDED 1 OR MORE NEW MEMBERS**

**GENDER DISTRIBUTION**

MALE	946 (65.29%)
FEMALE	503 (34.71%)
NON BINARY	0 (0.00%)
PREFER NOT TO ANSWER	0 (0.00%)

**DROPPED MEMBERS**

[CLICK HERE FOR CUMULATIVE MEMBERSHIP DATA](#)

DECEASED	30
CLUB CANCELLED	0
OTHER	196
<b>TOTAL</b>	<b>226</b>

TOTAL FAMILY UNIT MEMBERS 271

FAMILY MEMBERS PAYING HALF DUES 137